

HAUS B2

EG WOHNUNG B2.01

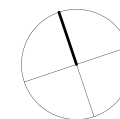
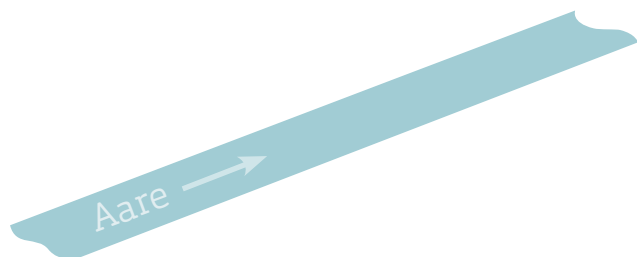
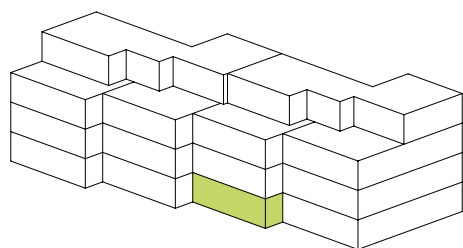
Wohnungs-Nummer:	B2.01
Etage:	EG
Anzahl Zimmer:	3 1/2
Nettowohnfläche:	87.8 m ²
Sitzplatz gedeckt:	19.0 m ²
Keller:	8.5 m ²
Nettomiete:	CHF 1'470
Nebenkosten:	CHF 200

OPTIONAL

Bastelraum

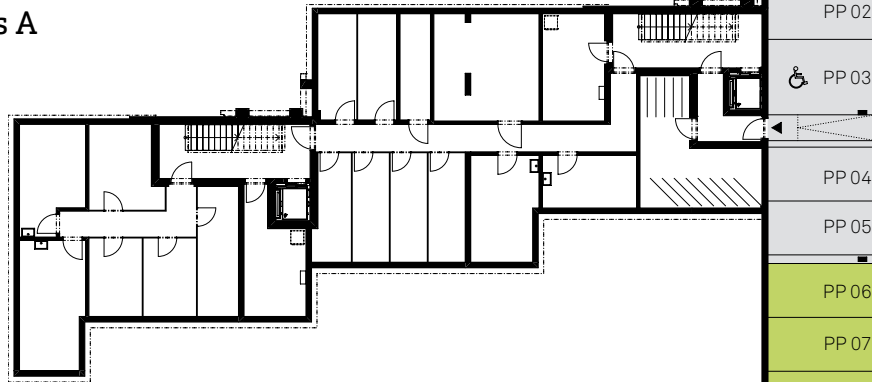
B2-BR1:	14.9 m ²	CHF 100
B2-BR2:	14.5 m ²	CHF 100

Einstellhallenplatz	CHF 130
---------------------	---------

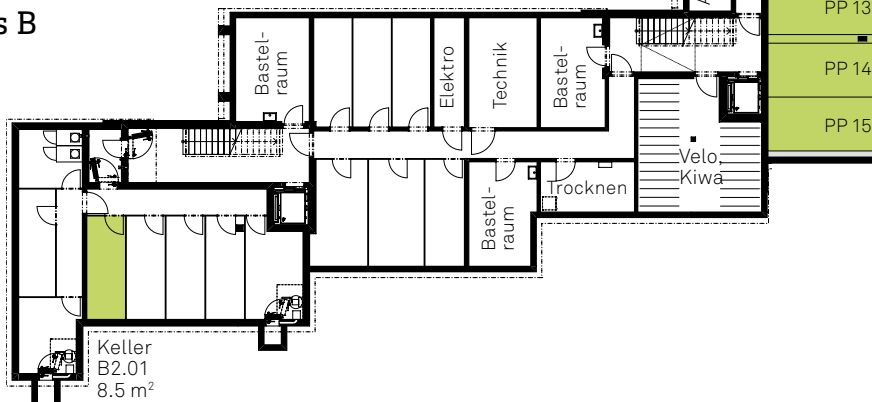


EINSTELLHALLE

Haus A



Haus B



Haus C

Haus D

