

HAUS B1

EG WOHNUNG B1.02

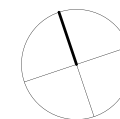
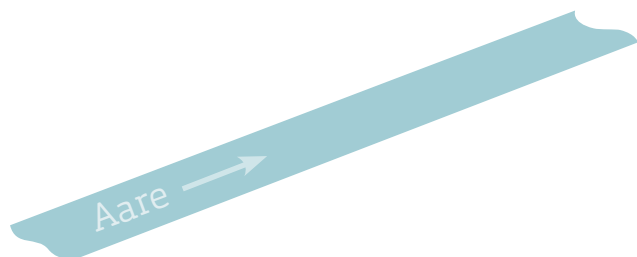
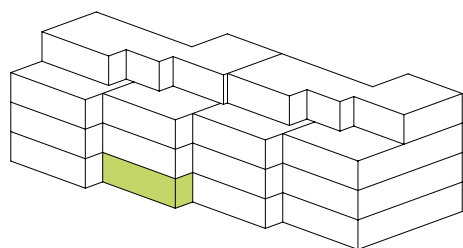
Wohnungs-Nummer:	B1.02
Etage:	EG
Anzahl Zimmer:	4 1/2
Nettowohnfläche:	106.6 m ²
Sitzplatz gedeckt:	19.0 m ²
Keller:	8.4 m ²
Nettomiete:	CHF 1'700
Nebenkosten:	CHF 220

OPTIONAL

Bastelraum

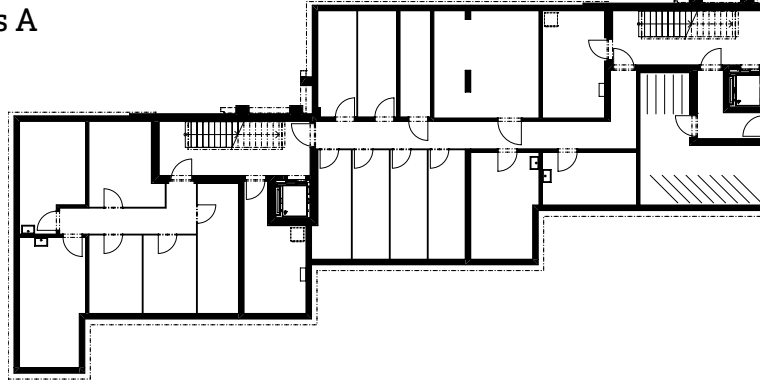
B1-BR1: 16.3 m² CHF 110

Einstellhallenplatz CHF 130

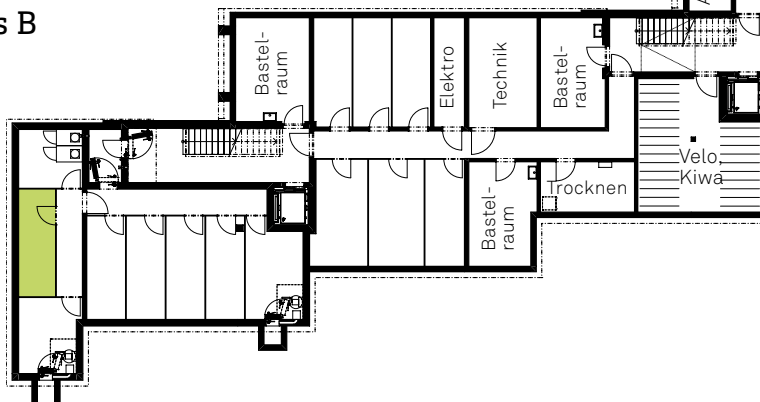


EINSTELLHALLE

Haus A



Haus B



Keller
B1.02
8.4 m²



Haus C

Haus D

