

HAUS B1

EG WOHNUNG B1.01

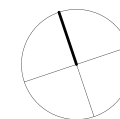
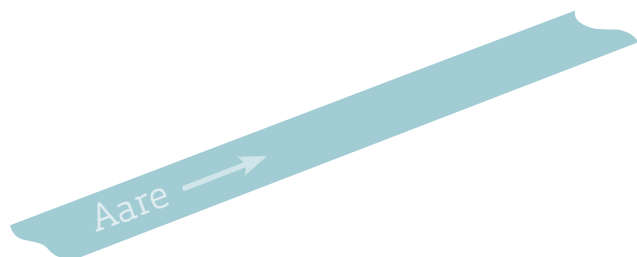
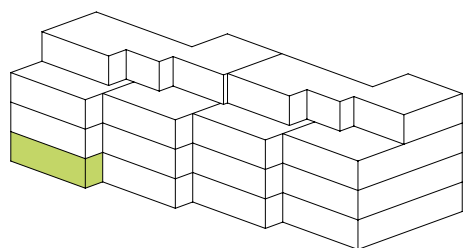
Wohnungs-Nummer:	B1.01
Etage:	EG
Anzahl Zimmer:	3 1/2
Nettowohnfläche:	87.3 m ²
Sitzplatz gedeckt:	19.0 m ²
Keller:	8.0 m ²
Nettomiete:	CHF 1'470
Nebenkosten:	CHF 200

OPTIONAL

Bastelraum

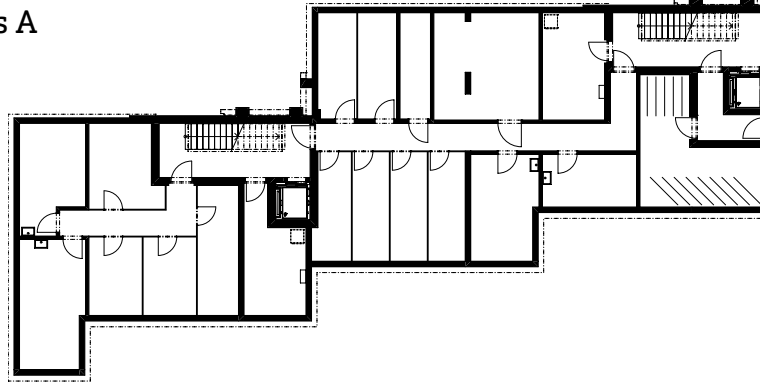
B1-BR1:	16.3 m ²	CHF 110
---------	---------------------	---------

Einstellhallenplatz		CHF 130
---------------------	--	---------

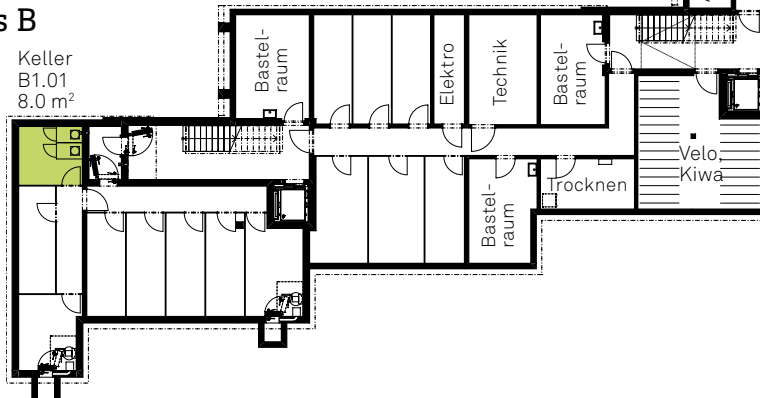


EINSTELLHALLE

Haus A



Haus B



Haus C

Haus D

